



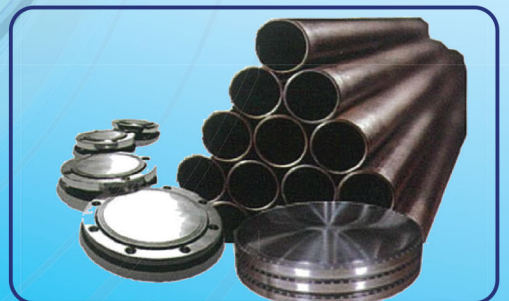
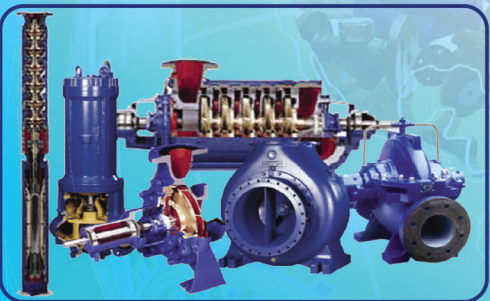
Quality is Our Commitment

Industrial Valve

Pump, Burner

QFlex, Flanges

Piping & Fittings





Product : ARITA Gate, Globe, Swing Check, Wafer Check, Y-Strainer, Butterfly, Ball, Safety Valve & Needle Valve
Material : Stainless Steel SS304 & SS316
Connection : Screwed End BSPT
Size : 1/4" ~ 4"
Connection : Flanged End JIS 10K, ANSI 150, PN 10, PN 16
Size : 1/2" ~ 24"
Application : Industrial Piping, Oil/Chemical Refinery, Power Plant & Marine



Product : ARITA Gate, Globe, Swing Check, Wafer Check, Y-Strainer, Butterfly, Ball, Safety, Air Vent, Air Release Valve & Sight Glass
Material : Cast Iron
Connection : Screwed End BSPT
Size : 1/2" ~ 2"
Connection : Flanged End JIS 10K, ANSI 150, PN 10, PN 16
Size : 1/2" ~ 48"
Application : Industrial Piping, Water Supply, Waste Water Treatment, Light Oil



Product : ARITA Gate, Globe, Swing Check, Wafer Check, Y-Strainer, Butterfly, Ball, Safety Valve, Bellows Seal Globe Valve
Material : Cast Steel
Pressure : PN 20 ~ 420 / Class 150 ~ 2500
Connection : ASME 16.5, ASME B16.47, ASME B16.25, DIN 2543 ~ 2551
Size : 1/2" ~ 36"
Application : Industrial Piping, Oil/Chemical Refinery, Power Plant & Steam



Product : ARITA Ball, Gate, Globe, Swing Check, Y-Strainer, Safety Valve, 2/2 Way Solenoid Valve
Material : Brass / Bronze
Class : 125#, 150#, 200#, 400#, 600#
Connection : Screwed End BSPT
Size : 1/4" ~ 4"
Application : Industrial Piping, Water Supply, Waste Water Treatment, Air, Gas, Light Oil & Steam



Product : UL/FM Approved OS&Y Gate, Globe, Swing Check, Y-Strainer, Butterfly, Automatic Air Vent Valve & Sprinkler
Material : Cast Iron / Ductile Iron
Class : 125#, 150#, 250#
Connection : Flanged End ANSI B16.1, EN1092-2 PN 16, BS 10 Table D/ Table E
Size : 1/2" ~ 12"
Application : Fire Fighting System (UL/FM Approved Certificate)



Product : ARITA Butterfly Valve & Wafer Check Valve
Material : Cast Iron, Cast Steel, Stainless Steel SS304 & SS316
Seat : NBR, EPDM, Teflon, Viton
Operator : Lever, Gear, Pneumatic & Electric Actuator
Connection : Universal Flanged End JIS 10K, ANSI 150, PN 10, PN 16
Size : 1/2" ~ 48"
Application : Industrial Piping, Water Supply, Waste Water Treatment, Light Oil, Oil/Chemical Refinery, Power Plant



Q-FLEX





Product : ARITA Pneumatic & Electric Actuator, Control Valves
Type : Linear & Rotary
Connection : Screwed End BSPT
Size : 1/4" ~ 4"
Connection : Universal Flanged End JIS 10K/20K, ANSI 150/300, PN 10/16/25
Size : 1/2" ~ 24"



Product : ARITA High Performance Triple Eccentric Butterfly Valve
Material : Cast Steel, Stainless Steel SS304 & SS316
Seat : Metal Seated
Operator : Lever, Gear, Pneumatic & Electric Actuator
Connection : Universal Flanged End JIS 10K/20K, ANSI 150/300, PN 10/16/25
Size : 1/2" ~ 24"
Application : Ship Building, Steel Mill, Petrochemical, Oil/Chemical Refinery, Power Plant, Chemical Industry, Mining, Sugar & Paper, Steam



Product : ARITA Knife Gate Valve
Material : Cast Iron, Cast Steel, Stainless Steel SS304 & SS316
Seat : Metal Seated
Operator : Lever, Gear, Pneumatic & Electric Actuator
Connection : Universal Flanged End JIS 10K, ANSI 150, PN 10, PN16
Size : 1/2" ~ 24"
Application : Petrochemical, Oil/Chemical Refinery, Sugar & Paper, Power Plant, Chemical Industry



Product : UNIJIN Thermometer & Pressure Gauges
Material : P110 General Industrial Pressure Gauge
 P254 (Dry)/ P255 (Oil) Fully Stainless Steel 304 Pressure Gauge
 P250 (Dry)/ P251 (Oil) SS 304, Brass Conn. Pressure Gauge
 Diaphragm type, Snubber type Pressure Gauge
Connection : 1/4", 3/8", 1/2" Screwed End BSPT
Application : Industrial Piping, Low Pressure & Steam application



Product : Qflex Single Sphere Joint (QFSC), Twin Sphere Joint (QFTC), Twin Union Flexible Joint (QFTU), Handbuilt Expansion Joint
Material : Neoprene, Nitrile, Natural Rubber, EPDM
Connection : QFSC & QFTC – JIS 10K/20K, ANSI 150/300, PN10/16
 QFTU – Screwed End BSPT
Size : QFSC & QFTC – 1" ~ 24", QFTU – 1/2" ~ 3"
Application : Industrial Piping, Water Supply, Waste Water Treatment, Oil/Chemical Refinery, Power Plant



Product : ARITA Flanges, Pippings & Fittings
Material : HDPE, Mild Steel, Carbon Steel, Stainless Steel SS304 & SS316
Connection : Flanged End JIS 10K/20K, ANSI 150/300, PN 10/16
Size : 1/2" ~ 24"
Type : ERW & Seamless
Application : Industrial Piping, Water Supply, Waste Water Treatment, Oil/Chemical Refinery, Power Plant, Steam



Q-FLEX

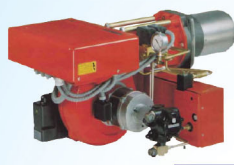




Gas Burners



Heavy Oil Burners



Industrial Burners



Light Oil Burners



Product : Riello Burner Low nox Light Oil Burners, Low nox Dual Fuel, Industrial Burners, Air Duct Burners.



Thermostatic Steam trap



Thermodynamic Steam trap



Ball float Steam trap



Bello Seal Globe Valve



Thermodynamic Steam trap



Globe Valve Ductile Iron



Globe Valve Forged Steel



Y-Strainer



Ball float Steam trap



Thermodynamic Steam trap

Product : ARITA Steam Valve, Thermodynamic Steam Trap, Thermostatic Steam Trap, Ball Float Steam Trap, Pressure Reducing Valve (Pilot Operated and Direct Acting), Steam Separator, Control Valve, Bellow Seal Globe Valve, Ball Valve
Material : Cast Steel, Cast Iron, Stainless Steel SS304 & SS316
Connection : Screwed End BSPT, Socket Welded, Flanged End JIS 10K, ANSI 150, PN 10/16/25
Size : 1/2" ~ 12"



Product : HDPE Welding Machine, Piping & Fittings
PE Welder : Manual, Hydraulic Welding Machine, Socket Fusion, Electro Fusion, Data Logger
Standard : PN 6.3, PN 8, PN10
Size : 1/2" ~ 64"
Application : Industrial Piping, Water Supply, Waste Water Treatment



Q-FLEX



BRASS, CAST IRON, DUCTILE IRON VALVES



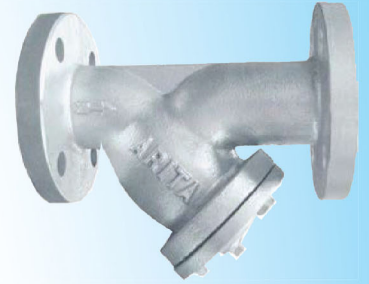
Gate Valve



Globe Valve



Swing Check Valve



Y-Strainer



Ball Valve



Air Vent



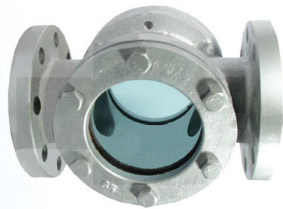
Air Release Valve



Butterfly Valve



Wafer Check Valve



Sight Glass



Solenoid Valve



Safety Valve



Brass Gate Valve



Brass Swing Check Valve



Brass Ball Valve



Brass Y-Strainer



Q-FLEX



STAINLESS STEEL, CAST STEEL, FORGED STEEL VALVES



Gate Valve
(OS&Y)



Globe Valve



Swing Check Valve



Y-Strainer



Ball Valve



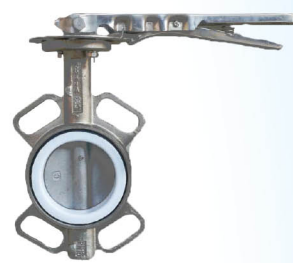
Ball Valve
(ISO 5211 Mounting Pad)



Knife Gate Valve
(Lugged Type)



High Performance Butterfly
(Wafer Type)



Butterfly Valve, Lever
(Wafer Type)



Butterfly Valve, Gear
(Wafer Type)



Disco Check Valve
(Wafer Type)



3 PC Disco Check Valve



Spring Check Valve



Double Door Check Valve
(Wafer Type)



Single Door Check Valve
(Wafer Type)



1 PC Ball Valve



2 PC Ball Valve



3 PC Ball Valve



3Way Ball Valve
(L Port / T Port)



Y Type Piston Valve



Gate Valve



Swing Check Valve



Needle Valve



Solenoid Valve



Safety Relief Valve
(Lever / Non Lever)



Q-FLEX



CAST IRON, DUCTILE IRON & CONTROL VALVES



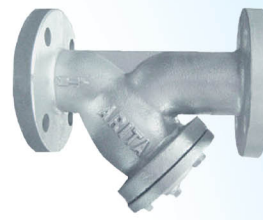
Gate Valve
(OS&Y)



Globe Valve



Swing Check Valve



Y-Strainer



Ball Valve



Resilient Gate Valve
(NRS)



Gate Valve
(Underground)



Butterfly Valve, Lever
(Wafer Type)



Butterfly Valve, Gear
(Wafer Type)



Butterfly Valve, Gear
(Double Flange)



Double Door Check Valve
(Wafer Type)



Single Door Check Valve
(Wafer Type)



Silent Check Valve
(Wafer Type)



Lift Check Valve
(Double Flange)



Foot Valve



Safety Relief Valve
(Pilot Operated)



Pressure Reducing Valve
(Pilot Operated)



Ball Float Valve
(Remote Control)



Air Vent



Air Release Valve



Motorized Butterfly
(Electric ON/OFF)



Motorized Butterfly
(Electric Modulating)



3 Way Motorized Ball Valve
(Electric Modulating)



Motorized Ball Valve
(Pneumatic SA/DA)



Motorized Ball Valve
(Pneumatic SA/DA)



Q-FLEX



STEAM VALVES, FLEXIBLE JOINT & ACCESSORIES



Bellow Seal Globe Valve



S-Pattern Globe Valve



S-Pattern Lift Check Valve



Pressure Reducing Valve
(Pilot Operated)



Pressure Reducing Valve
(Self Operated)



Thermodynamic
Steam Trap



Ball Float
Steam Trap



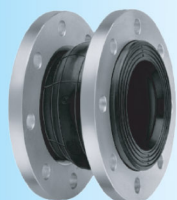
Thermostatic Bimetallic
Steam Trap



Two Port Pneumatic
Control Valve



Safety Relief Valve
(Lever)



Single Sphere Rubber
Flexible Joint



Double Sphere Rubber
Flexible Joint



SUS Flexible Hose



Electro-Pneumatic Positioner
(Linear / Rotary)



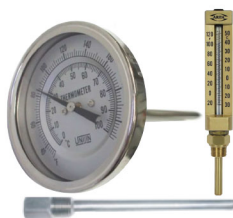
PPR Welder



Pressure Gauge



U / Ring Syphon
Snubber



Bi-Metal / Glass Thermometer
Thermowell



Pressure Switch



HDPE Welding Machine
(Manual)



90° Elbow



Tee



Union



Flange



HDPE Welding Machine
(Hydraulic)



Q-FLEX



BRASS VALVES & FIRE FIGHTING ACCESSORIES



Gate Valve
(BGA-AKZ)



Gate Valve
(BGA-ASW)



Globe Valve



Swing Check Valve



Y-Strainer



Ball Valve
(BBA-AF200)



Ball Valve
(BBA-AF400)



Ball Valve
(BBA-AF600)



Spring Check Valve



Spring Check Foot Valve



Solenoid Valve
(Water)



Solenoid Valve
(Steam)



Solenoid Valve
(Water Proof)



Pressure Reducing Valve
(Direct Acting)



Safety Relief Valve
(Lever / Non Lever)



UL/FM Gate Valve
(OS&Y)



FM Swing Check Valve



Y-Strainer



FM Air - Release Valve



Sight Glass



UL/FM Butterfly Valve
With Supervisory Switch



Double Door Check Valve
(Wafer Type)



Fire Angle Hose Valve
(Coupling, Cap & Chain)



Sprinkler Head
(Pendent / Upright
Sidewall / Royal Flush)



Fire Hose Cabinet
(Complete Set)

STAINLESS STEEL, CAST STEEL, FORGED STEEL VALVES



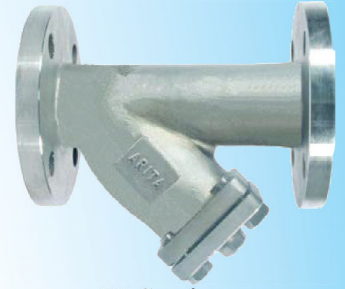
Gate Valve



Globe Valve



Swing Check Valve



Y-Strainer



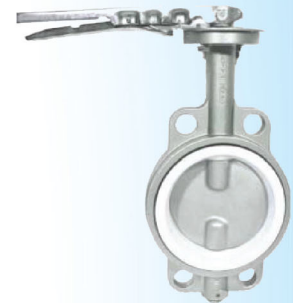
Ball Valve



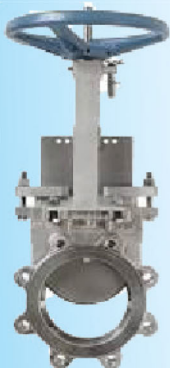
3 Pieces Ball Valve



Wafer Check Valve



Butterfly Valve



Knife Gate Valve



Disco Check Valve



Needle Valve



Safety Valve



Bellow Seal Globe Valve



Thermodynamic Steam Trap



Ball Float Steam Trap



Pressure Reducing Valve



Q-FLEX

